



# Object Configuration Manager (OCM) Explained

By Bill Loban

***Editor's Note:** There have been quite a few articles published in JDEtips that bring up the subject of OCMs. Some of our readers have queried, "That's nice – what the heck's an OCM, anyway?. So we asked Bill Loban to shed some light on the issue. Here are the basics of what the heck OCMs are, what they are used for, and how to get one of your own. Bill would like to write more on this subject later. We'll try to hold him to that promise!*

## Introduction

Object Configuration Manager (OCM) is an application in JD Edwards EnterpriseOne® that allows you to specify the location of object execution. By using OCM you are able to specify locations for running reports, location of different databases, and locations for the execution of business functions. Without a doubt, the Object Configuration Manager is the backbone behind the Configurable Network Computing (CNC) concept.

In some installations, there is a desire to separate the processing done in the Production environment from that of the Prototype and Development environments. This is done by using OCM to specify where the different processing is done. An advantage of having separate processors for Production and Prototype/Development environments is that you have a fallback; should one of the servers go down, all of the processing could be switched to the other server. This process would just take a few configuration changes in OCM and the company is back in business.

## Preparation

There's some thought and planning required prior to making configuration changes using the OCM program. You need to decide what you are aiming to accomplish. Is the goal to separate the processing of batch jobs on different servers? Do you want to separate the batch processing for all users or just certain roles? Do you want to separate the Production processing from Prototype and Development? These are just a few of the tasks that can be accomplished using the powerful ability of the Object Configuration Manager.

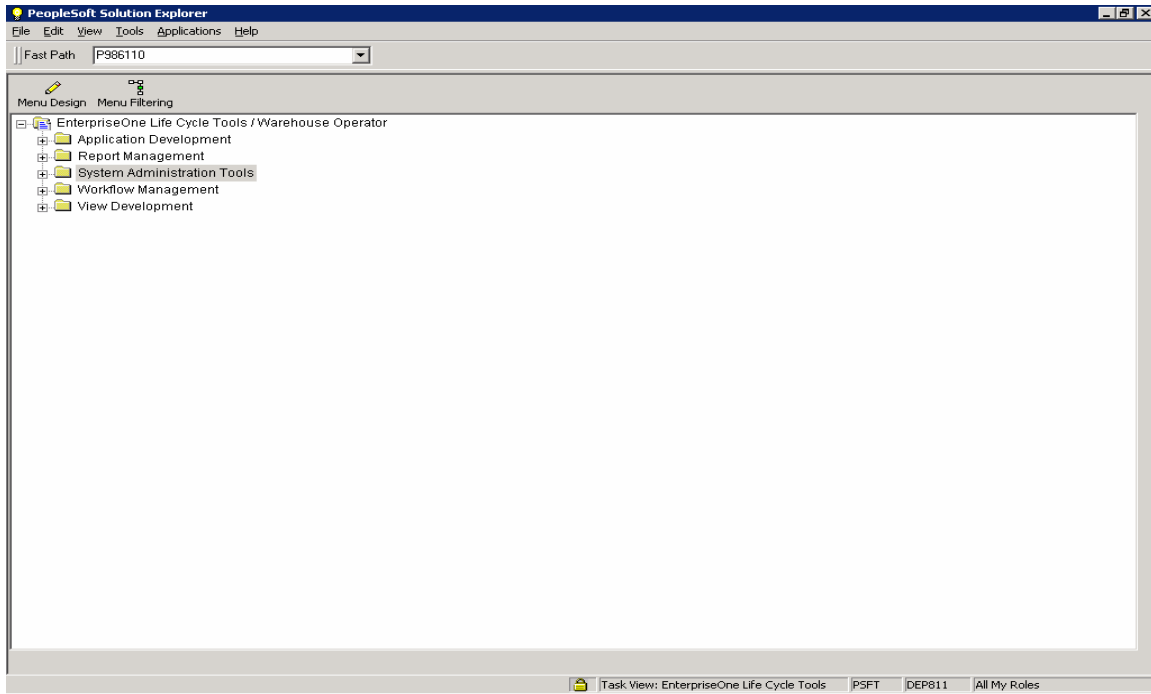
## Accessing OCM

As with most applications in EnterpriseOne, there are multiple ways to access this application. Since OCM is a system administration function, the application must be accessed from a fat client. There is no access to OCM from the HTML client yet.

The first way is the old reliable fast path. Enter P986110 in fast path and press Enter.

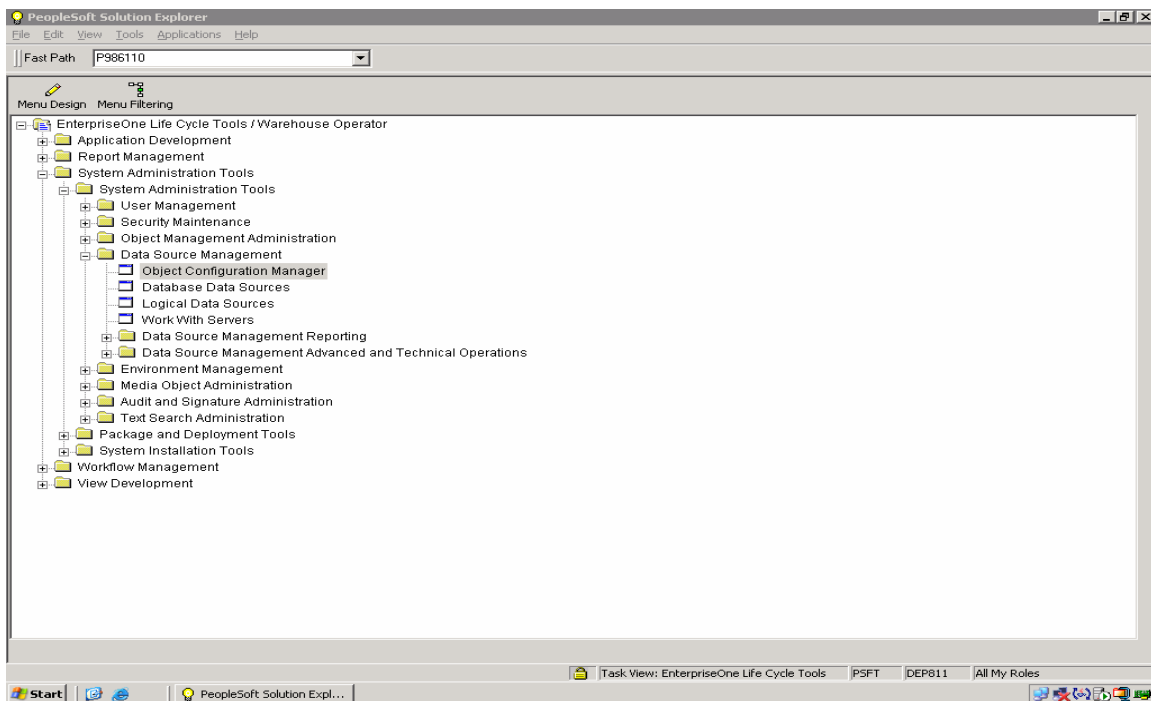


# Object Configuration Manager (OCM) Explained



Another way to access the OCM application is via the Menu structure:

- Expand System Administration Tools
- Expand Data Source Management
- Double click on Object Configuration Manager



## This Article Continues...

**Subscribers**, log in from our main search page to access the full article:

[www.JDEtips.com/MyAccess.html](http://www.JDEtips.com/MyAccess.html)

**Not a Subscriber? Gain access to our full library of JDE topics:**

[www.JDEtips.com/JD-Edwards-Library](http://www.JDEtips.com/JD-Edwards-Library)

Visit [www.JDEtips.com](http://www.JDEtips.com) for information on the JDEtips University schedule, private training and consulting, and our Knowledge Express Document Library.

License Information: The use of JDE is granted to JDEtips, Inc. by permission from J.D. Edwards World Source Company. The information on this website and in our publications is the copyrighted work of JDEtips, Inc. and is owned by JDEtips, Inc.

NO WARRANTY: This documentation is delivered as is, and JDEtips, Inc. makes no warranty as to its accuracy or use. Any use of this documentation is at the risk of the user. Although we make every good faith effort to ensure accuracy, this document may include technical or other inaccuracies or typographical errors. JDEtips, Inc. reserves the right to make changes without prior notice.

Oracle and J.D. Edwards EnterpriseOne and World are trademarks or registered trademarks of Oracle Corporation. All other trademarks and product names are the property of their respective owners.

Copyright © by JDEtips, Inc.